

ODS 96 B / UPG 10
Configuration software





Leuze electronic GmbH + Co. KG
 P.O. Box 1 111, D-73277 Owen/Teck
 Tel. +49(0) 7021/ 573-0,
 Fax +49(0) 7021/ 573-199
 E-mail: info@leuze.de, www.leuze.de

Sales and Service

Sales Region North
 Phone 07021/573-306
 Fax 07021/9850950

Postal code areas
 20000-38999
 40000-53999
 54000-55999
 56000-65999
 97000-97999



Sales Region East
 Phone 035027/629-106
 Fax 035027/629-107

Postal code areas
 01000-19999
 39000-39999
 98000-99999

Sales Region South
 Phone 07021/573-307
 Fax 07021/9850911

Postal code areas
 66000-96999

Worldwide

AR (Argentina)
 Nortécnica S. R. L.
 Tel. Int. + 54 1147 57-3129
 Fax Int. + 54 1147 57-1088

AT (Austria)
 Schmachtl GmbH
 Tel. Int. + 43 732 76460
 Fax Int. + 43 732 785036

AU + NZ (Australia + New Zealand)
 Balluff-Leuze Pty. Ltd.
 Tel. Int. + 61 3 9720 4100
 Fax Int. + 61 3 9738 2677

BE (Belgium)
 Leuze electronic nv/sa
 Tel. Int. + 32 2253 16-00
 Fax Int. + 32 2253 15-36

BR (Brasil)
 Leuze electronic Ltda.
 Tel. Int. + 55 11 5180-6130
 Fax Int. + 55 11 5181-3597

BV (Republic of Belarus)
 Logoprom ODO
 Tel. Int. + 375 017 235 2641
 Fax Int. + 375 017 230 8614

CH (Switzerland)
 Leuze electronic AG
 Tel. Int. + 41 44 834 02-04
 Fax Int. + 41 44 833 26-26

CL (Chile)
 Imp. Tec. Vignola S.A.I.C.
 Tel. Int. + 56 3235 11-11
 Fax Int. + 56 3235 11-28

CN (People's Republic of China)
 Leuze electronic Trading
 (Shenzhen) Co. Ltd.
 Tel. Int. + 86 755 862 64909
 Fax Int. + 86 755 862 64901

CO (Colombia)
 Componentes Electronicas Ltda.
 Tel. Int. + 57 4 351 1049
 Fax Int. + 57 4 3511019

CZ (Czech Republic)
 Schmachtl CZ s.r.o.
 Tel. Int. + 420 244 0015-00
 Fax Int. + 420 244 9107-00

DK (Denmark)
 Desim Elektronik APS
 Tel. Int. + 45 7022 00-66
 Fax Int. + 45 7022 22-20

ES (Spain)
 Leuze electronic S.A.
 Tel. Int. + 34 93 4097900
 Fax Int. + 34 93 4903515

FI (Finland)
 SKS-automatio Oy
 Tel. Int. + 358 20 764-61
 Fax Int. + 358 20 764-6820

FR (France)
 Leuze electronic sarl.
 Tel. Int. + 33 160 0512-20
 Fax Int. + 33 160 0503-65

GB (United Kingdom)
 Leuze Maysar electronic Ltd.
 Tel. Int. + 44 14 8040 85-00
 Fax Int. + 44 14 8040 38-08

GR (Greece)
 UTECO A.B.E.E.
 Tel. Int. + 30 211 1206 900
 Fax Int. + 30 211 1206 999

HK (Hong Kong)
 Sensortech Company
 Tel. Int. + 852 26510188
 Fax Int. + 852 26510388

HU (Hungary)
 Kvaix Automatika Kft.
 Tel. Int. + 36 272 2242
 Fax Int. + 36 272 2244

IL (Israel)
 Galoz electronics Ltd.
 Tel. Int. + 972 3 9023456
 Fax Int. + 972 3 9021990

IN (India)
 Global Tech (India) Pvt. Ltd.
 Tel. Int. + 91 20 24470085
 Fax Int. + 91 20 24470086

IR (Iran)
 Tavan Ressian Co. Ltd.
 Tel. Int. + 98 21 2606766
 Fax Int. + 98 21 2002893

IT (Italy)
 Leuze electronic S.r.l.
 Tel. Int. + 39 02 26 1106-43
 Fax Int. + 39 02 26 1106-40

JP (Japan)
 C. Illies & Co., Ltd.
 Tel. Int. + 81 3 3443 4143
 Fax Int. + 81 3 3443 4118

KR (South Korea)
 Leuze electronic Co., Ltd.
 Tel. Int. + 82 31 3828228
 Fax Int. + 82 31 3828522

KZ (Republic of Kazakhstan)
 KazPromAutomatics Ltd.
 Tel. Int. + 7 3212 50 11 50
 Fax Int. + 7 3212 50 10 00

MX (Mexico)
 Leuze Lumiflex México, S.A. de C.V.
 Tel. Int. + 52 8183 7186-16
 Fax Int. + 52 8183 7185-88

MY (Malaysia)
 Ingermark (M) SDN BHD
 Tel. Int. + 60 360 3427-88
 Fax Int. + 60 360 3421-88

NL (Netherlands)
 Leuze electronic BV
 Tel. Int. + 31 418 65 35-44
 Fax Int. + 31 418 65 38-08

NO (Norway)
 Eliteco A/S
 Tel. Int. + 47 35 56 20-70
 Fax Int. + 47 35 56 20-99

PL (Poland)
 Balluff Sp. z o.o.
 Tel. Int. + 48 71 338 49 29
 Fax Int. + 48 71 338 49 30

PT (Portugal)
 LA2P, Lda.
 Tel. Int. + 351 214 447070
 Fax Int. + 351 214 447075

RO (Romania)
 O'Boyle s.r.l.
 Tel. Int. + 40 2 56201346
 Fax Int. + 40 2 56221036

RU (Russian Federation)
 Leuze electronic OOO
 Tel. Int. + 7 495 93375 05
 Fax Int. + 7 495 93375 05

SE (Sweden)
 Leuze Sensorgruppen AB
 Tel. + 46 8 7315190
 Fax + 46 8 7315105

SG + PH + ID (Singapore + Philippines + Indonesia)
 Balluff Asia Pte. Ltd.
 Tel. Int. + 65 6252 43-84
 Fax Int. + 65 6252 43-84

SI (Slovenia)
 Tipteh d.o.o.
 Tel. Int. + 386 1200 51-50
 Fax Int. + 386 1200 51-51

SK (Slovakia)
 Schmachtl SK s.r.o.
 Tel. Int. + 421 2 58275600
 Fax Int. + 421 2 58275601

TH (Thailand)
 Industrial Electrical Co. Ltd.
 Tel. Int. + 66 2 6426700
 Fax Int. + 66 2 6424249

TR (Turkey)
 Balluff Sensor Ltd. Sti.
 Tel. Int. + 90 212 3200411
 Fax Int. + 90 212 3200416

TW (Taiwan)
 Great CoTue Technology Co., Ltd.
 Tel. Int. + 886 2 29 83 80-77
 Fax Int. + 886 2 29 85 33-73

UA (Ukraine)
 SV Airera OOO
 Tel. Int. + 38 044 4961888
 Fax Int. + 38 044 4961818

US + CA (United States + Canada)
 Leuze electronic, Inc.
 Tel. Int. + 1 248 486-4466
 Fax Int. + 1 248 486-6699

ZA (South Africa)
 Countapulse Controls (PTY) Ltd.
 Tel. Int. + 27 116 1575-56
 Fax Int. + 27 116 1575-13

© All rights reserved, especially the rights of production, distribution and translation. Copying or reproductions in any form require the written consent of the manufacturer. Changes reflecting technical improvements may be made.

1	ODS 96B configuration software	3
1.1	Connecting the ODS 96B to a PC.....	3
1.2	Installing the configuration software.....	4
1.3	Starting the program	4
1.4	Main window of the ODS 96B configuration software.....	5
1.5	Configuration window.....	7
1.5.1	Description of the command buttons	7

Figure 1.1:	Connecting the ODS 96B to a PC via the UPG 10 programming terminal.....	3
Figure 1.2:	Device selection	4
Figure 1.3:	ODS 96B configuration software - main window	5
Figure 1.4:	ODS 96B configuration software - measurement.....	6
Figure 1.5:	ODS 96B configuration software - configuration window	7

1 ODS 96B configuration software

General description

The ODS 96B configuration software can be used both for the direct configuration of data with the ODS 96B connected, as well as "offline" without a sensor connected for the generation of device configurations.

If no ODS 96B is connected, a dialogue is displayed after starting the program in which you have to choose the device model (see chapter 1.3). After the offline generation of a parameter configuration, this configuration can be transmitted to the ODS 96B after connection to the PC has been established.

You can download the software on the Internet from www.leuze.de.

1.1 Connecting the ODS 96B to a PC

The ODS 96B is connected to a PC via the UPG 10 programming terminal. The terminal is simply inserted between the ODS 96B and the connection cable. The UPG 10 is connected to the PC via the serial interface cable that ships with the UPG 10.

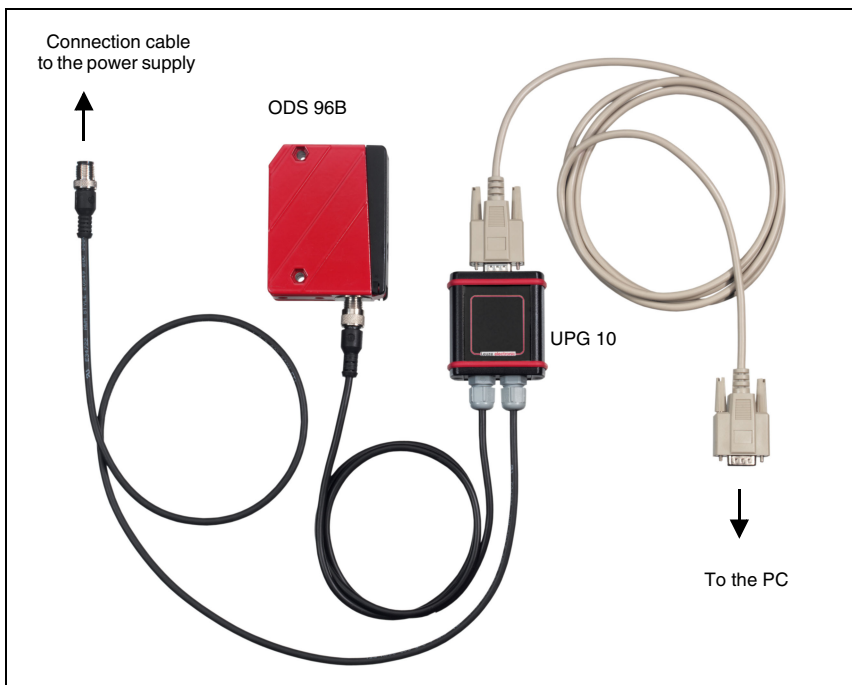


Figure 1.1: Connecting the ODS 96B to a PC via the UPG 10 programming terminal

1.2 Installing the configuration software

Requirements for the installation of the ODS 96B configuration software:

- Pentium® or faster Intel® processor (or compatible models, e.g. AMD®)
- At least 64 MB free main memory (RAM)
- Hard disk with at least 30 MB free memory
- RS 232 interface for sensor configuration
- Microsoft® Windows 98/NT/2000/XP

Starting the installation file

↳ Choose **Start** → **Run**. Insert drive and name of the installation file (e.g.: d:\setup.exe) and hit **OK**.

↳ In the following window, define the path for the installation directory and confirm with **End**.

1.3 Starting the program

After successful installation and restart of the computer, the configuration software is ready to use.

↳ Select the *ODS 96B configuration software icon* from the program group.

Without connected ODS, the following window appears after the program start, letting you choose a device:

Additional window without connected ODS 96B

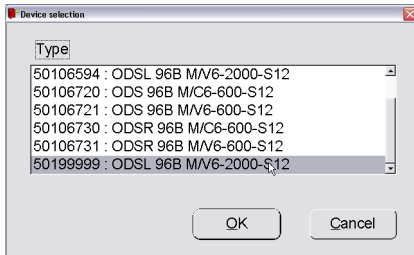


Figure 1.2: Device selection

1.4 Main window of the ODS 96B configuration software

After selecting a device type and confirming with OK, the following window appears:

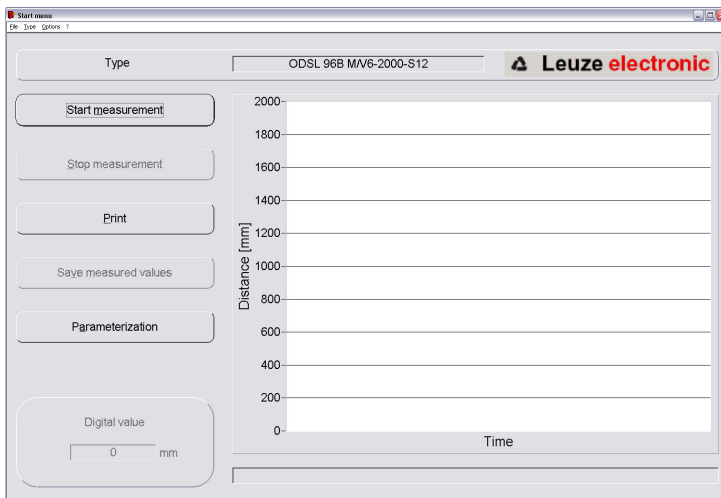


Figure 1.3: ODS 96B configuration software - main window

The **menu bar** of the ODS 96B configuration software offers the following functions

- **File** -> Exit program
- **Type** -> Load: Select the device type which is to be configured
- **Options** -> Language and interface selection. German and English are the available languages. Under Interface, you must select the COM port to which the ODS 96B is connected. The necessary communication parameters are automatically set for the interface.

Additional functions can be executed in the **main window**:

- **Start measurement** and **Stop measurement** are used to graphically represent the measurement values in the main window.

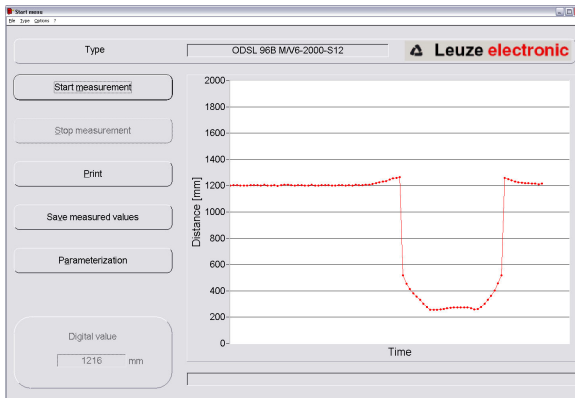


Figure 1.4: ODS 96B configuration software - measurement

- Use **Print** to send the currently detected measurement curve to the default Windows printer.
- **Save measured values** saves the current measurement values in a text file
- **Parameterization** opens the configuration window, see next chapter

1.5 Configuration window

The individual menu items are self-explanatory and correspond to the menus of the OLED display in the ODS 96B. Chapter "Configuration / menu structure ODS 96B" of the technical description ODS 96B contains a description of possible settings on page 31.

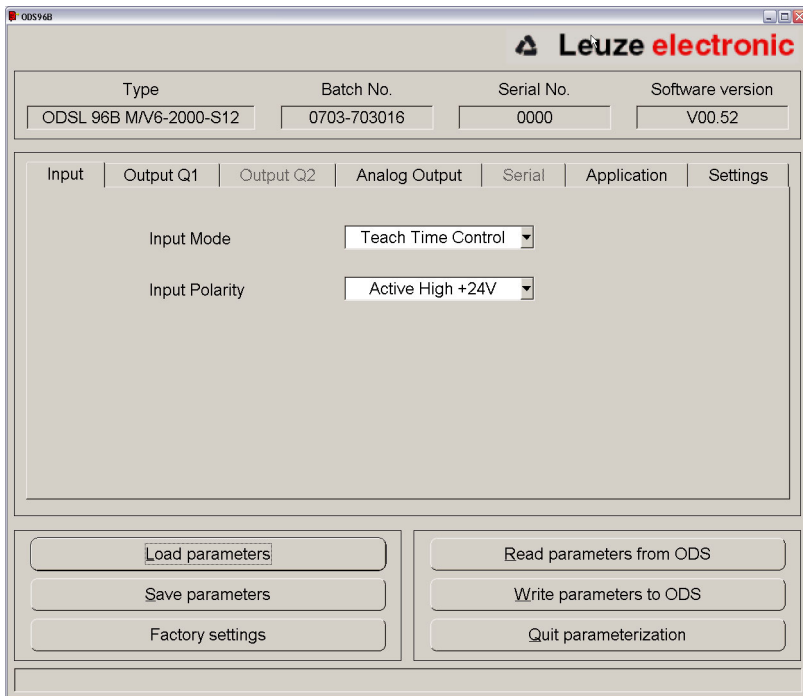


Figure 1.5:ODS 96B configuration software - configuration window

1.5.1 Description of the command buttons

The command buttons at the bottom of the screen have the following functions:

Load parameters

Loads a saved configuration from the hard disk.

Save parameters

Saves a created configuration on the hard disk.

Factory settings

Resets the connected ODS 96B to factory settings.

Read parameters from ODS

Reads and displays the configuration of the connected ODS 96B.

Write parameters to ODS

Saves the current configuration in the non-volatile parameter memory of the ODS 96B

Quit parameterization

Ends the program

***Notice***

Leuze electronic can only deliver distance sensors with default settings. You as customer are responsible for correct storage of your changed data sets. Back-up your device configuration on data carriers.