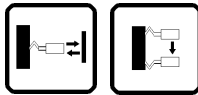


OF SERIES

The **OF series** offers a complete range of universal plastic fibreoptics, either for through-beam or diffuse and coaxial proximity detection, with free terminals that can be cut and connected to all the sensors with standard holes of 2.2 mm diameter.

Together with the standard models, suited to the most diffused applications, other versions for particular requirements are available: high temperature fibres resistant up to 125°C, ultra-flexible fibres with only 2 mm bending radius, highefficiency fibres with enhanced core, fibres with extending coiled cable, thin fibres with only 1 mm external diameter.

The OF series accessories include various additional lenses for focusing, collimating, or deviating the beam; as well as protecting metal sheaths, diameter adapters for thin.



HIGHLIGHTS

- Extra-flexible versions
- High-temperature versions
- High-efficiency versions
- Focusing, collimating and deviating lenses

APPLICATIONS

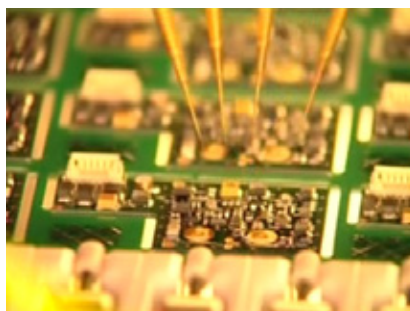
Beverage & Bottling



Packaging lines



Electronics



TECHNICAL DATA

External diameter (sheath)	Ø 2.2 mm
	Ø 1 mm (-TN vers.)
Internal diameter (core)	Ø 1 mm
	Ø 1.5 mm (-HP vers.)
	Ø 0.5 mm (-TN vers.)
Bending radius	25 mm
	15 mm (-TN vers.)
	5 mm (-XF vers.)
	2 mm (-UF vers.)
Normalised efficiency	refer to table 1
Mechanical protection	IP67
Core material	PMMA plastic
Sheath material	PE plastic
Terminal material	nickel-plated brass
Operating temperature	-40 ... +60°C
	-40 ... +125°C (-HT vers.)
Storage temperature	-40 ... +60°C
	-40 ... +125°C (-HT vers.)

TABLE

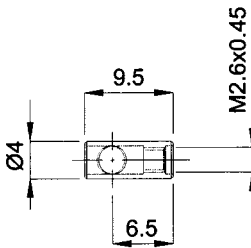
FIBRE TYPE	CODE	EFFICIENCY
standard	-ST-	100%
high-temperature	-HT-	70%
extra-flexible	-XF-	90%
ultra-flexible	-UF-	90%
high-efficiency	-HP-	125%
coiled cable	-CL-	65%
thin cable	-TN-	35%

Table 1: NORMALISED EFFICIENCY *

The operating distance is obtained multiplying the normalised efficiency value by the distance indicated for each sensor with standard fibre-optics.

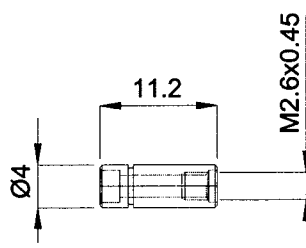
ACCESSORIES

AF-1
2 pcs 90° deviating lenses
Gain: distance x 0.7



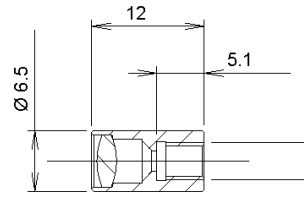
Suitable fibres: OF-43-xx

AF-2
2 pcs collimating lenses
Gain: distance x 4



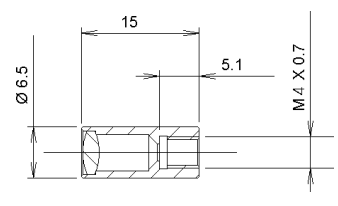
Suitable fibres: OF-43-xx

AF-3
1 pc focusing lenses
with 4 mm resolution
Operating distance: 19 ± 2 mm



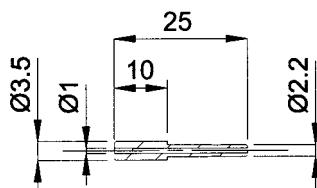
Suitable fibres: OF-44-xx

AF-4
1 pc focusing lenses
with 0.4 mm resolution
Operating distance: 7 ± 1 mm



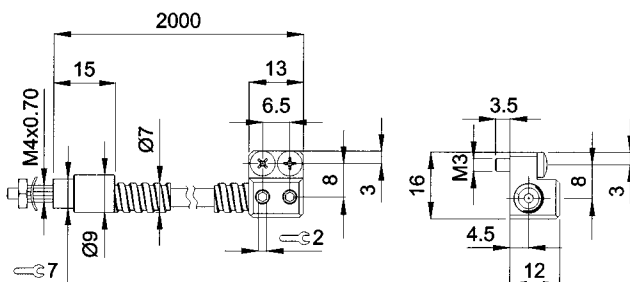
Suitable fibres: OF-44-xx

AF-5
2 pcs adapters Ø2.2mm for thin fibres Ø1mm
Material: plastic



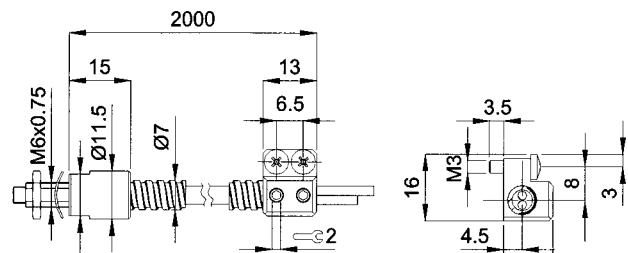
Suitable fibres: OF-xx-TN

AF-9
1 pc metal sheath for M4 x 0.7 fibres
Material: stainless steel



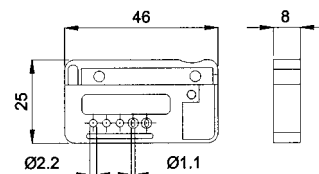
Suitable fibres: OF-43-xx

AF-7
1 pc metal sheath for M6 x 0.75 fibres
Material: stainless steel



Suitable fibres: OF-42-xx

AF-11
Fibre-cutting tool with Ø 2.2 mm and Ø 1.1 mm holes
Material: plastic with stainless steel blade

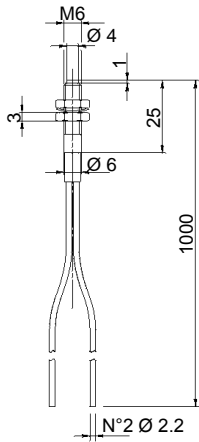


Suitable fibres: all

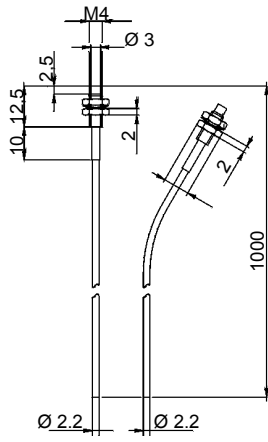
mm

FIBRE-OPTIC DIMENSIONS

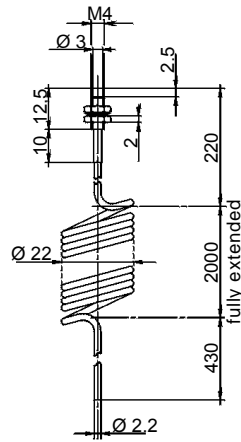
OF-18



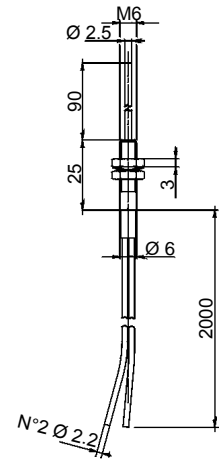
OF-19



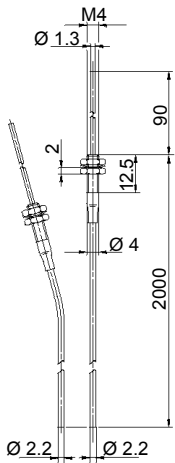
OF-21



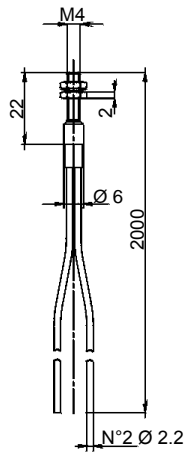
OF-22



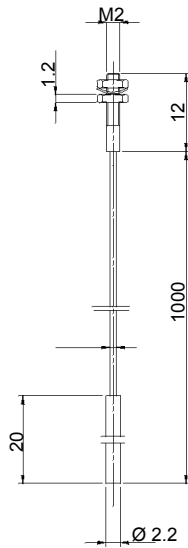
OF-23



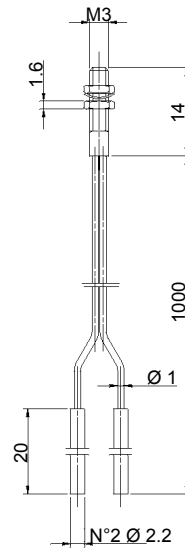
OF-24



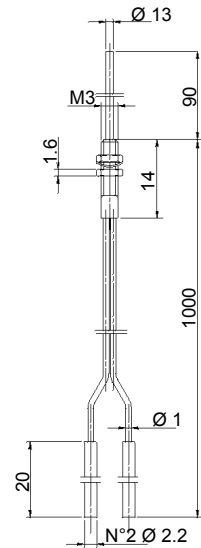
OF-25



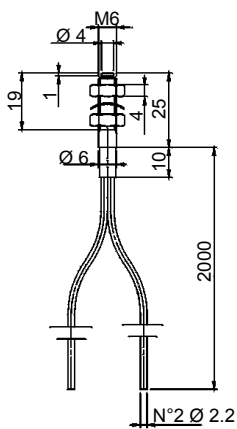
OF-26



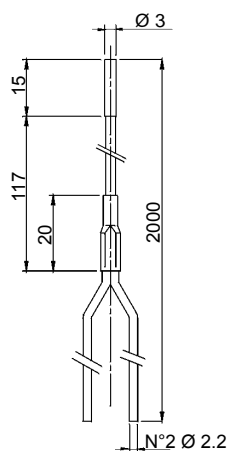
OF-28



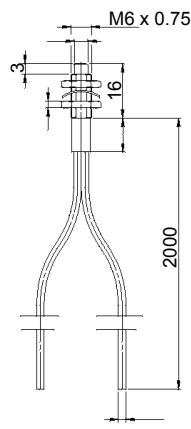
OF-36



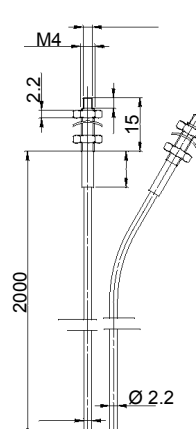
OF-38



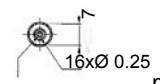
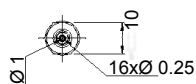
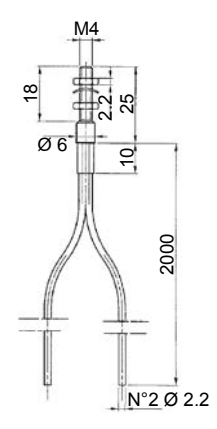
OF-42



OF-43



OF-44



mm

MODEL SELECTION AND ORDER INFORMATION

MODEL	OPTIC FUNCTION	FIBRE TYPE	LENGTH **	TERMINAL	CODE N°
OF-18-ST-10	proximity	standard	1 m	M6x1 mm	S76021801
OF-19-ST-10	through beam	standard	1 m	M4x0.7 mm	S76021901
OF-21-CL-20	through beam	coiled	2 m	M4x0.7 mm	S76022100
OF-22-ST-20	proximity	standard	2 m	M6x1 mm *	S76022200
OF-23-ST-20	through beam	standard	2 m	M4x0.7 mm *	S76022300
OF-24-ST-20	proximity	standard	2 m	M4x0.7 mm	S76022400
OF-25-TN-10	through beam	thin (Ø 1 mm)	1 m	M2x0.4 mm	S76022500
OF-26-TN-10	proximity	thin (Ø 1 mm)	1 m	M3x0.5 mm	S76022600
OF-28-TN-10	proximity	thin (Ø 1 mm)	1 m	M3x0.5 mm *	S76022800
OF-36-ST-20	coaxial proximity	standard	2 m	M6x1 mm	95A201000
OF-36-XF-20	coaxial proximity	extra-flexible	2 m	M6x1 mm	95A201330
OF-38-ST-20	proximity	standard	2 m	D3x15 mm	95A201070
OF-42-ST-20	proximity	standard	2 m	M6x0.75 mm	95A201340
OF-42-HT-20	proximity	high-temperature	2 m	M6x0.75 mm	95A201250
OF-42-UF-20	proximity	ultra-flexible	2 m	M6x0.75 mm	95A201260
OF-42-HP-20	proximity	high-efficiency	2 m	M6x0.75 mm	95A201270
OF-43-ST-20	through beam	standard	2 m	M4x0.7 mm	95A201350
OF-43-HT-20	through beam	high-temperature	2 m	M4x0.7 mm	95A201280
OF-43-UF-20	through beam	ultra-flexible	2 m	M4x0.7 mm	95A201290
OF-43-HP-20	through beam	high-efficiency	2 m	M4x0.7 mm	95A201300
OF-44-ST-20	coaxial proximity	standard	2 m	M4x0.7 mm	95A201310
OF-44-XF-20	coaxial proximity	extra-flexible	2 m	M4x0.7 mm	95A201320

Note: * a bendable stainless steel extension 90mm long protrudes from the threaded optic head

** the length indicated is approximate; please refer to the mechanical drawings for the exact dimensions

ACCESSORY SELECTION AND ORDER INFORMATION

MODEL	DESCRIPTION	SUITABLE FIBRES	CODE N°
AF-1	2 pcs 90° deviating lenses	OF-43-xx	95ACC2690
AF-2	2 pcs long distance collimating lenses (x 10)	OF-43-xx	95ACC2700
AF-3	1 pc focusing lens with 4 mm resolution	OF-44-xx	95ACC2710
AF-4	1 pc focusing lens with 0.4 mm resolution	OF-44-xx	95ACC2720
AF-5	2 pcs adapters Ø 2.2 mm for thin fibres	OF-xx-TN	95ACC2730
AF-7	1 pc metal sheath for M6 x 0.75 fibres	OF-42-xx	95ACC2750
AF-9	1 pc metal sheath for M4 x 07 fibres	OF-43-xx (*)	95ACC2770
AF-11	fibre-cutting tool with Ø 2.2 mm and Ø 1.1 mm holes	all	95ACC2780

Note: 2 sheaths have to be ordered for both the emitter-receiver sections



The company endeavours to continuously improve and renew its products; for this reason the technical data and contents of this catalogue may undergo variations without prior notice. For correct installation and use, the company can guarantee only the data indicated in the instruction manual supplied with the products.