

## Compact models

### Series LNZ - Air flow controller

DC 24 V

Analog output

G1/2 thread



Design	G1/2	
Dimensions		
Detection range [m/s]	0.5...30	
Output		
ID-No.	P11110*	P11111*
Type	LNZ 450 GA-K	LNZ 450 GA-S
Supply voltage [V]	24 DC $\pm 15\%$	
Current consumption [mA]	80	
Current output [mA]	4...20	
Load $R_L$ [ $\Omega$ ]	200...500	
Ambient temperature [ $^{\circ}\text{C}$ ]	-20...+70	
Medium temperature [ $^{\circ}\text{C}$ ]	-20...+80	
Temperature gradient [K/min]	20	
Start-up time typ. [s]	20...90	
Reaction time typ. [s]	4...30	
Compressive strength [bar]	30	
Sensor material	AISI 303	
Display flow	LED-array	
Protection [EN 60529]	IP 67	
Connection	2 m PVC-cable 3x0.5 mm <sup>2</sup>	M12 connector
*		

### Accessories

connecting cable type SLG 3-2, SLG 3-5, SLW 3-2, SLW 3-5, see page 1.91

# Air Flow Sensors



## Compact models

### Series LNZ - Air flow controller

AC 230 V • AC 115 V

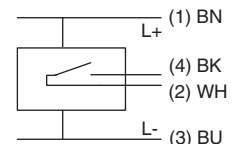
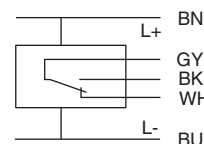
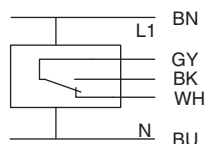
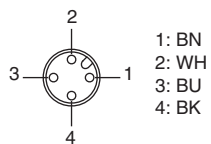
DC 24 V

Relay output

G1/2 thread



Design	G1/2		G1/2	
Dimensions				
Detection range [m/s]	0.5...30		0.5...30	0.5...30
Output				
ID-No.	P11102		P11103	
Type	LNZ 450 WR1-K		LNZ 450 WR2-K	
Supply voltage [V]	115 AC ±15%		230 AC ±15%	
Current consumption [mA]	60		30	
Switching voltage [V]	250 AC / 60 DC		250 AC / 60 DC	
Switching current [A]	4 AC / 4 DC		4 AC / 4 DC	
Switching power max.	1000 VA / 60 W		1000 VA / 60 W	
Ambient temperature [°C]	-20...+70		-20...+70	
Medium temperature [°C]	-20...+80		-20...+80	
Temperature gradient [K/min]	20		20	
Start-up time typ. [s]	10...90		10...90	
Reaction time typ. [s]	2...30		2...30	
Compressive strength [bar]	30		30	
Sensor material	AISI 303		AISI 303	
Housing material	PBT		PBT	
Display flow	LED-array		LED-array	
Protection [EN 60529]	IP 67		IP 67	
Connection	2 m PVC-cable 5x0.5 mm <sup>2</sup>		2 m PVC-cable 5x0.5 mm <sup>2</sup>	M12 connector



Accessories connecting cable type SLG 4-2, SLG 4-5, SLW 4-2, SLW 4-5, see page 1.91