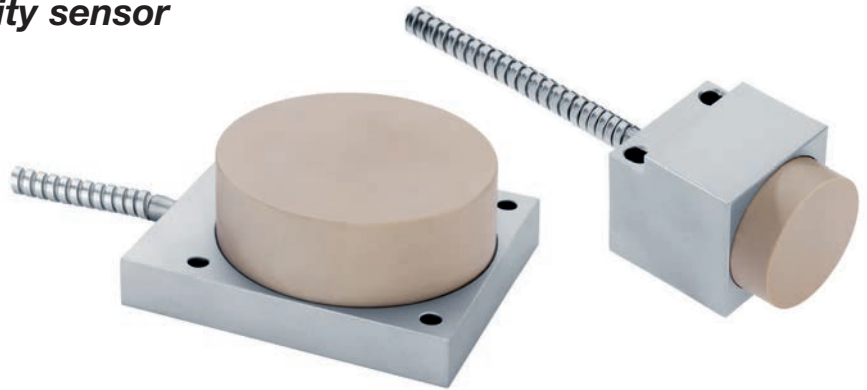


High temperature 250 °C

Series IRH / IDH - Proximity sensor

Armoured cable

With connector for cable amplifier



Design	Cuboid 40 mm	Ø80 mm	DC PNP • M30x1.5
Dimensions			
Installation non flush (nf)			
Operating distance sn [mm] Switching output PNP	20 nf, adjustable	40 nf, adjustable	amplifier
ID-No.	P31294	P31295	P31204
Type	IRH 040 S250	IDH 080 S250	IK 030 GSP
Supply voltage [V]	-	-	10...30
Switching current [mA]	-	-	200
Current consumption [mA]	-	-	15
Voltage drop [V]	-	-	1.5
Ambient temperature [°C]	0...+250	-	0...+70
Short circuit proof	-	-	•
Reverse protection	-	-	•
EMC-class	A	-	A
Switching frequency [Hz]	30	-	30
Protection [EN 60529]	IP 60	-	IP 67
Function indicator	-	-	LED yellow
Stand-by indicator	-	-	LED green
Housing material	Aluminium / PEEK		AISI 316 Ti
Connection cable	5 m FEP-cable, Ø8 mm armoured cable		-
Connection	M12 connector		M12 connector
t x1000 [h]			
Accessories	connecting cable SLG 3-2 (Z01076), page 3.65		