

Demanding environment

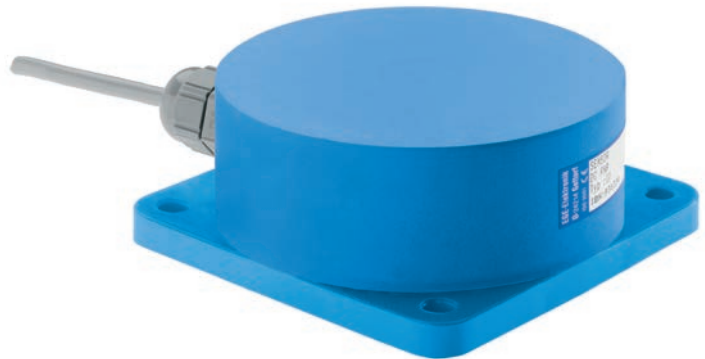
Series ID - Proximity switches

Ø 105 mm

DC 10...55 V
AC 20...250 V

Sensing range adjustable

Increased EMC



| Design | DC PNP • Ø 105 mm | DC PNP • Ø 105 mm | AC • Ø 105 mm programmable |
|--|--|---|---|
| Dimensions Installation non flush (nf) | | | |
| Operating distance sn [mm] (Adjustable range) | 100 nf (20...110) | 100 nf (20...110) | 70 nf (20...110) |
| GSP ID-No. P31323 Type IDU 105 GSP | | P31324 ID 105 GSP | - |
| GSOP ID-No. P31267 Type IDU 105 GSOP | | P31268 ID 105 GSOP | - |
| WP ID-No. - Type - | | - | P31269 IDS 105 WP |
| Supply voltage [V] | 10...55 DC | 10...55 DC | 20...250 AC |
| Switching current [mA] | 400 | 400 | 400 |
| Short circuit proof | • | • | 3000 mA/10 ms |
| Reverse protection | • | • | - |
| Voltage drop [V] | 2 | 2 | 6 eff. |
| Minimum load current [mA] | - | - | 8 |
| Current consumption [mA] | 4 | 4 | 2.5 |
| Switching frequency [Hz] | 20 | 20 | 10 |
| Ambient temperature [°C] | -25...+75 | -25...+75 | -25...+75 |
| EMC-class | A | A | A |
| Protection [EN 60529] | IP 67 | IP 67 | IP 67 |
| LED display | • | • | • |
| Housing material | PBT | PBT | PBT |
| Connection | M12 connector | GSP: 2 m PVC-cable, 3x0.5 mm ² GSOP: 2 m PVC-cable, 4x0.5 mm ² | PG-plug connection 2 m, 2x0.75 mm ² , PVC |
| | GSP | GSOP | WP |
| Accessories | connecting cable SLG 3-2 (GSP) / SLG 4-2 (GSOP), page 3.65 | | |