

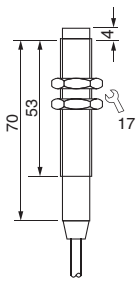
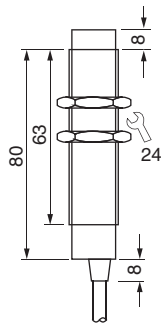



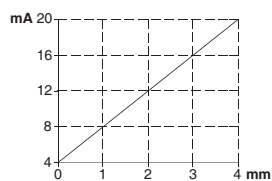
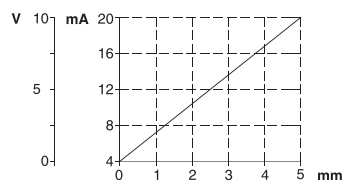
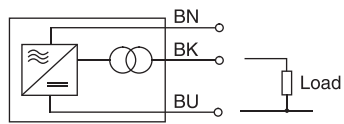
Analog output

Series IGA - Proximity sensors

M12 / M18
Metal sleeve

0...10 V
4...20 mA



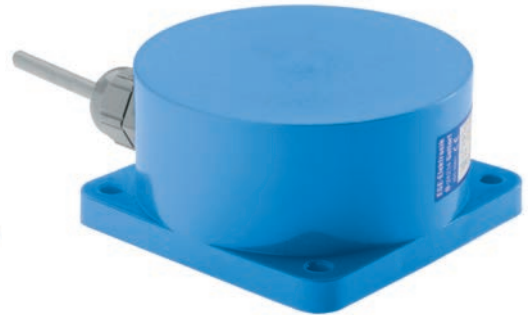
| Design | M12x1 | M18x1 | M18x1 |
|--|--|--|---|
| Dimensions |  |  | |
| Installation non flush (nf) | | | |
| Analog range [mm] | 0...4 nf | 0...5 nf | 0...5 nf |
| Output |  |  |  |
| ID-No. | 4...20 mA P31128 | 0...10 V P31040 | 4...20 mA P31129 |
| Type | IGA 104 GI | IGA 005 GU | IGA 005 GI |
| Supply voltage [V] | 18...27 DC | 18...27 DC | 18...27 DC |
| Current consumption max. [mA] | 40 | 25 | 40 |
| Voltage output max. [V] | - | 11 | - |
| Output current max. [mA] | 23 | - | 23 |
| Linearity deviation [%] | 10 | 5 | 5 |
| Load resistance R _L [kΩ] | <0.4 | >2 | <0.4 |
| Ambient temperature [°C] | | -25...+70 | |
| Temperature deviation [%] | | 10 | |
| Protection [EN 60529] | | IP 67 | |
| Housing material | | Br-Ni / PBT | |
| Connecting | 2 m PVC-cable 3x0.34 mm ² | 2 m PVC-cable 3x0.5 mm ² | |
| Output signal with approaching iron plate ST37 |  |  | |
| Connection diagram |  | | |

Analog output

Series IGA / IDA - Proximity sensors

M30
Ø 80 mm

0...10 V
4...20 mA



| Design | M30x1.5 | | Ø 80 mm | |
|--|-------------------------------------|---------------------|--------------------|---------------------|
| Dimensions | | | | |
| Installation non flush (nf) | | | | |
| Analog range [mm] | 0...10 nf | 0...10 nf | 0...30 nf | 0...30 nf |
| Output | | | | |
| ID-No. | 0...10 V P31041 | 4...20 mA P31130 | 0...10 V P31043 | 4...20 mA P31131 |
| Type | IGA 010 GU | IGA 010 GI | IDA 030 GU | IDA 030 GI |
| Supply voltage [V] | 18...27 DC | 18...27 DC | 18...27 DC | 18...27 DC |
| Current consumption max. [mA] | 25 | 40 | 25 | 40 |
| Voltage output max. [V] | 11 | - | 11 | - |
| Output current max. [mA] | - | 23 | - | 23 |
| Linearity deviation [%] | 5 | | | |
| Load resistance R _L [kΩ] | >2 | <0.4 | >2 | <0.4 |
| Ambient temperature [°C] | -25...+70 | | | |
| Temperature deviation [%] | 10 | | | |
| Protection [EN 60529] | IP 67 | | | |
| Housing material | Br-Ni / PBT | | PBT | |
| Connection | 2 m PVC-cable 3x0.5 mm ² | | | |
| Output signal with approaching iron plate ST37 | | | | |
| Connection diagram | | | | |

Inductive Sensors



Analog • High temperature 160 °C

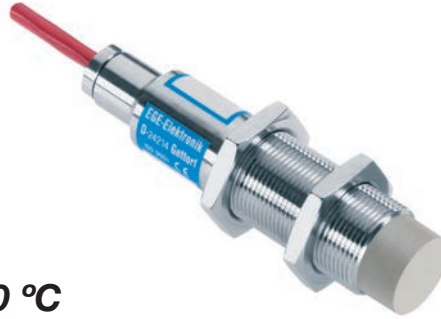
Series IGT - Proximity sensors

M18

4...20 mA

For the connection to amplifier IKM 120 GA

Permanent temperature 160 °C



| Design | IGT 005 | IKM 120 GA |
|--|---------------------------------|-----------------|
| Dimensions | | |
| Installation non flush (nf) | | |
| Analog range [mm] | 0...5 nf | - |
| ID-No. | P31143 | P31144 |
| Type | IGT 005 | IKM 120 GA |
| Supply voltage [V] | - | 24 DC ±20% |
| Current consumption [mA] | - | 30 |
| Current output [mA] | - | 4...20 mA |
| Linearity [%] | 6 | 0.5 |
| Load R _L [Ω] | - | 50...500 |
| Ambient temperature [°C] | -25...+160 | -20...+60 |
| Temperature deviation [%] | 10 | 2 |
| Protection [EN 60529] | IP 67 | IP 40 |
| Housing material | AISI 316 Ti / PKS | PC |
| Connection | 2 m PTFE 3x0.75 mm ² | terminal screws |
| Output signal with approaching iron plate ST37 | | |
| Connection diagramm | | |