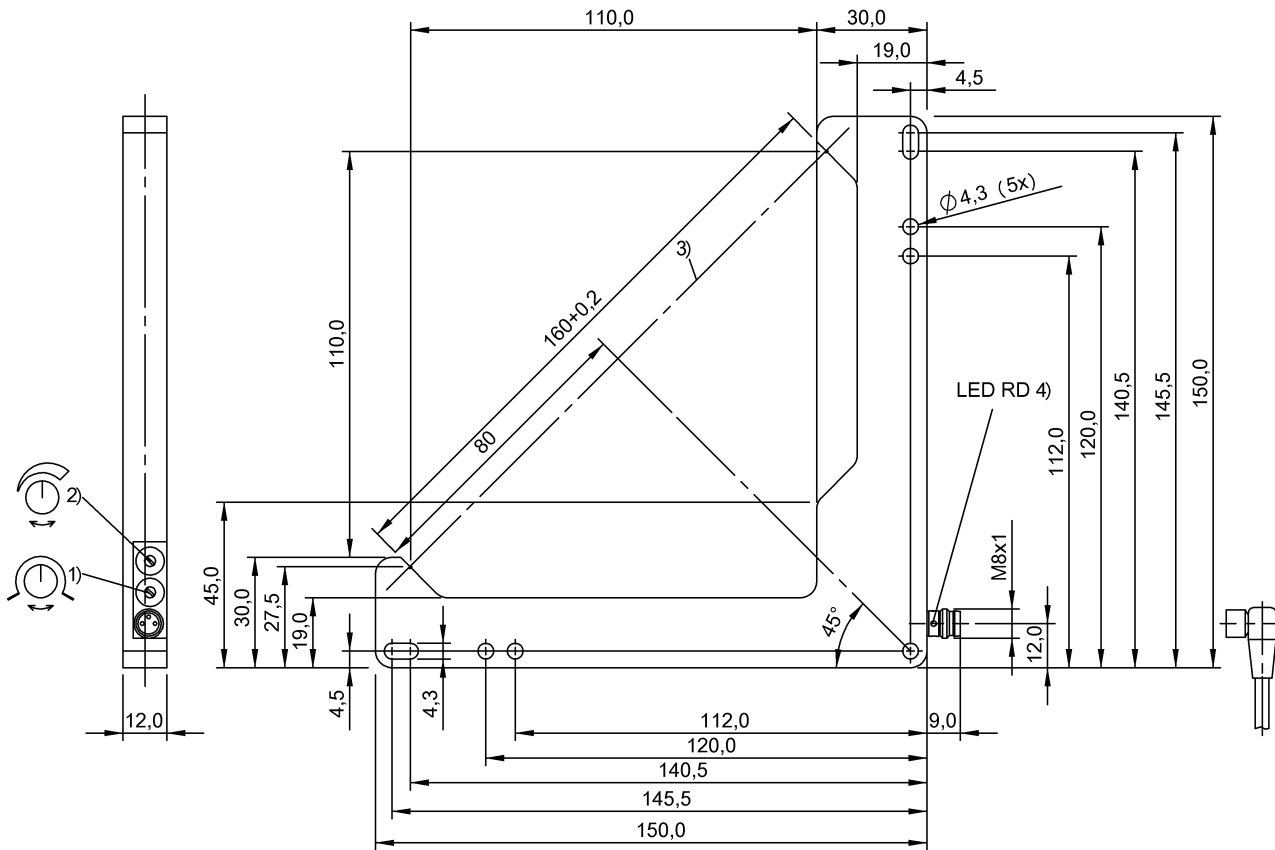


BWL 110110D-R011-S49  
BWL0005



1) Light-on/dark-on 2) Sensitivity 3) Optical axis 4) Output function



## Display/Operation

Adjuster	Potentiometer 270° (2x)
Setting	Sensitivity Light-on/dark-on

Ready delay $t_{rv}$ max.	200 ms
Residual current $I_r$ max.	50 $\mu$ A
Switching frequency	1500 Hz
Turn-off delay $t_{off}$ max.	0.33 ms
Turn-on delay $t_{on}$ max.	0.33 ms
Utilization category	DC -13
Voltage drop $U_d$ max. at $I_e$	3 V

## Electrical connection

Connection	M8x1-Connector, 3-pole
Contact, surface protection	Gold plated
Polarity reversal protected	yes
Short-circuit protection	yes

## Environmental conditions

Ambient temperature	-10...60 °C
Protection type IEC 60529	IP67

## Electrical data

Hysteresis $H$ max.	0.2 mm
Load capacitance max. at $U_e$	1 $\mu$ F
No-load current $I_o$ max. at $U_e$	35 mA
Operating voltage $U_b$	10...30 VDC
Pollution degree	3
Protected against miswiring	yes
Rated insulation voltage $U_i$	75 V DC
Rated operating current $I_e$ DC	200 mA
Rated operating voltage $U_e$ DC	24 V

## General data

Approval/Conformity	CE cULus
Basic standard	IEC 60947-5-2
Series	D
Style	Angle Straight connection
Trademark	Global

## BWL 110110D-R011-S49 BWL0005

### Material

Housing material	Zinc, Die casting
Material sensing surface	Glass
Surface protection	painted

### Mechanical data

Dimension	12 x 150 x 159 mm
Fastening detail	Screw M4
Smallest part typ.	0.60 mm

### Optical data

Ambient light max.	5000 Lux
Beam characteristic	Divergent
Light type	LED Red light
Principle of optical operation	Through-beam sensor
Wave length	636 nm

### Output/Interface

Switching output	PNP Normally open/Normally closed (NO/NC)
------------------	---

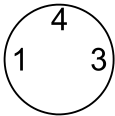
### Range/Distance

Ripple max. (% of Ue)	10 %
-----------------------	------

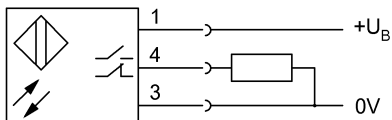
### Remarks

Reference object (target): Steel plate, 50 x 50, thickness 0.5 mm, lateral approach.  
 Only for applications per NFPA 79 (machines with a supply voltage of maximum 600 V). Use an R/C (CYJV2) cable with suitable properties for attaching the device.  
 Order accessories separately.  
 For additional information, refer to user's guide.  
 Factory default setting for switching output: Normally open.  
 The sensor is functional again after the overload has been eliminated.

### Connector view



### Wiring Diagram



### Symbols for Optoelectronic Sensors

