

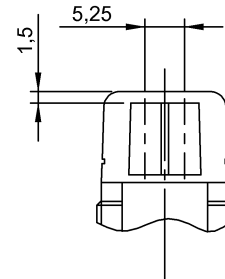
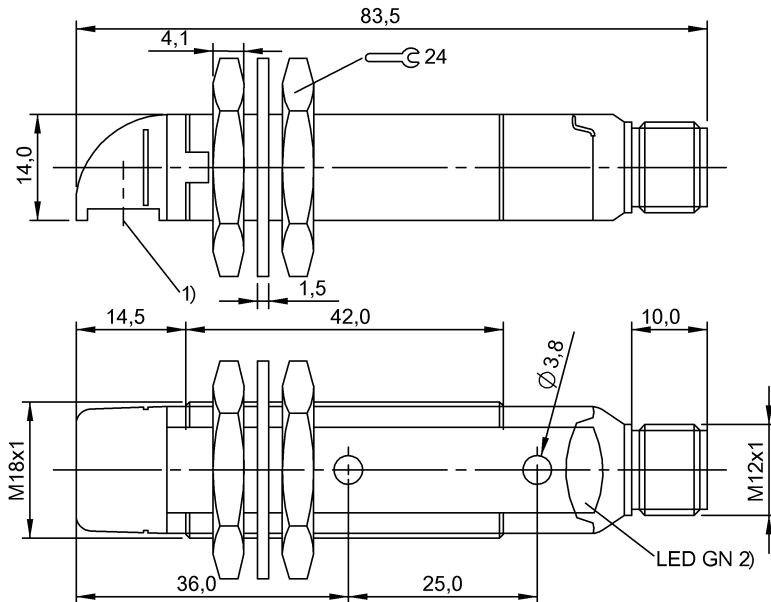
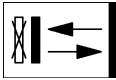
**BOS 18KW-PA-1N1R-S4-C**  
**Ordering code: BOS00LP**

Diffuse sensor  
 Series 18KW  
 Working Range: 0...80 mm

PNP (2x), antivalent  
 LED, red light  
 DC, direct current

**BALLUFF**

sensors worldwide



1) Optical axis, 2) Output function

**Characteristic data**

Operating voltage	10...30 V DC
Connection	Connector, M12x1-S04
Switching freq. f max.	1000 Hz
Indicator	Output function - LED YE
Adjuster	No
Short-circuit protected	yes
Protected against polarity reversal	yes
Enclosure Type per IEC 60529	IP67
Protection class	II

**Optical data**

Principle of optical operation	Light scanner, triangulation
Switching function, optical	NO/NC: light-on/dark-on
Light type	LED, red light
Wavelength	660 nm
Ambient light max.	5,000 Lux
Optical special feature	Fixed background suppression

**Electrical data**

Rated operating voltage Ue DC	24 V
Effective operating current Ie	100 mA
Rated insulation voltage Ui	75 V DC
Ripple max. (% of Ue)	8
Switching output	PNP (2x)
Switching function	NO/NC
Turn-off delay toff max.	0,5 ms

Turn-on delay ton max.	0,5 ms
No-load current max. Io at Ue	35 mA
Voltage drop Ud max. (at Ie)	2 V

**Mechanical data**

Eff. switching distance Sr	80 mm
Capture range Sd	0...80 mm
Beam characteristic	Focused
Range Sn	Sn = 80 mm
Minimum operating distance	0 mm
Connector type	M12x1-S04
Sensing surface material	PMMA
Housing material	PBT
Mounting type	Nut M18x1 Screw M3
Design	Flat cylinder, 90° optics
Ambient temperature	-25...55 °C
Tightening torque	1.5 Nm

**Basic data**

Basic standard IEC 60947-5-2  
 The sensor is functional again after the overload has been eliminated.  
 Reference object (target): Gray card, 100 x 100 90 % remission, axial approach.  
 For additional information, refer to user's guide.  
 Order accessories separately.

**BOS 18KW-PA-1N1R-S4-C**  
**Ordering code: BOS00LP**

Diffuse sensor  
Series 18KW  
Working Range: 0...80 mm

PNP (2x), antivalent  
LED, red light  
DC, direct current

**BALLUFF**  
*sensors worldwide*

