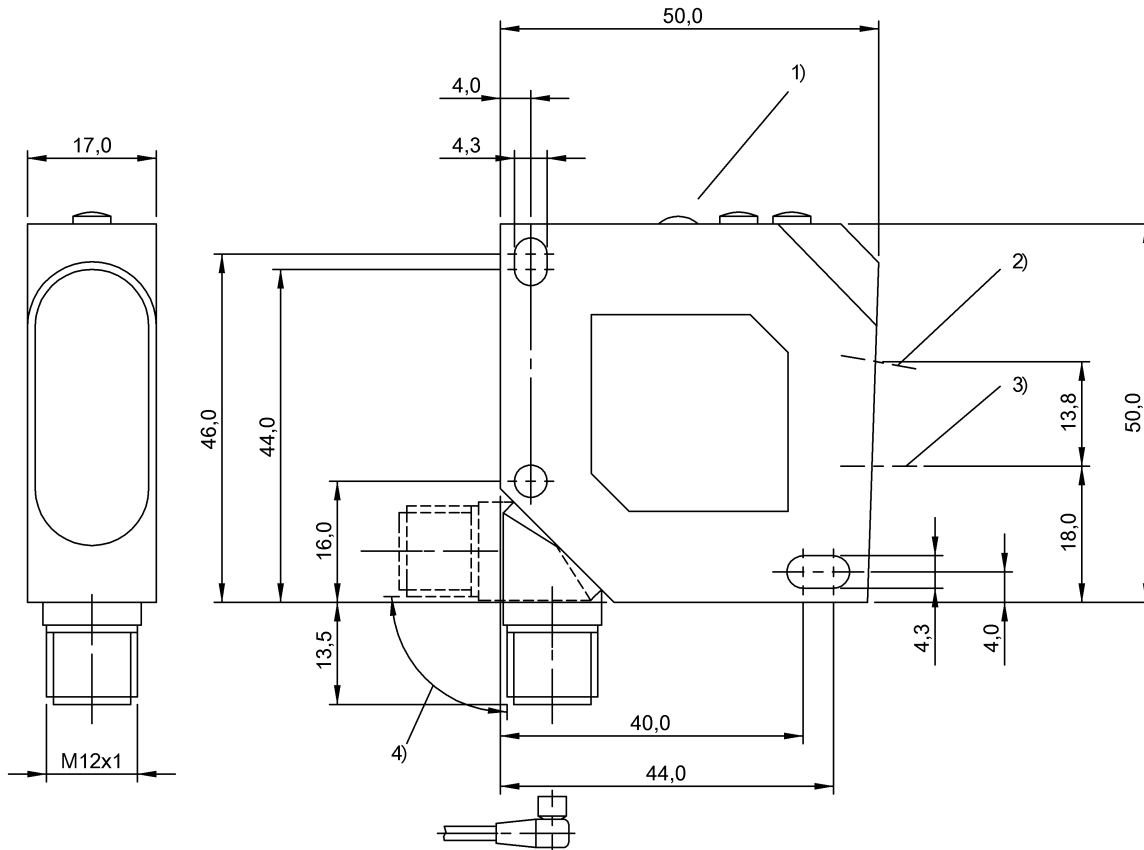
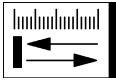


**BOD 26K-LA02-S4-C**  
**Ordering code: BOD0004**

Photoelectric distance sensor  
 Series 26K  
 Working Range: 45...85 mm

0...10 V  
 Laser red light, Laserklasse 2  
 DC, direct current

**BALLUFF**  
*sensors worldwide*



1) Display and control panel, 2) Optical axis receiver, 3) Optical axis emitter, 4) 270° rotatable

**Characteristic data**

Operating voltage 18...28 V DC  
 Connection Connector, M12x1-S04  
 Indicator Power - LED GN  
 Short-circuit protected Yes  
 Protected against polarity reversal Yes  
 Enclosure Type per IEC 60529 IP67  
 Protection class II

**Optical data**

Principle of optical operation Light scanner, triangulation  
 Light spot size, typical Ø0.8 mm at focal point  
 Light type Laser red light  
 Wavelength 670 nm  
 Ambient light max. 3,000 Lux  
 Laser class per IEC 60825-1 2  
 Average power  $P_o$  max. < 1 mW (IEC 60825-1)

**Electrical data**

Rated operating voltage  $U_e$  DC 24,0 V  
 Rated insulation voltage  $U_i$  50 V DC  
 No-load current max.  $I_o$  at  $U_e$  35 mA  
 Fall time 90% - 10% min. 20 ms

Analogue output  
 Rise time 10% - 90% min.  
 Value range analogue  
 Output curve deviation max.  
 Output characteristic  
 Remanence

Analog U  
 30 ms  
 0...10 V  
 1 % of  $W_h$   
 Linear rising

**Mechanical data**

Working range  
 Beam characteristic  
 Resolution  
 Near working distance  $W_l$   
 Far working distance  $W_h$   
 Connector type  
 Sensing surface material  
 Housing material  
 Mounting type  
 Design  
 Ambient temperature  
 Temperature drift max.

WR = 45...85 mm  
 Focus, typ., at 65 mm  
 20 µm  
 45 mm  
 85 mm  
 M12x1-S04  
 PMMA  
 ABS  
 Screw M4  
 Block, rotatable connection  
 0...45 °C  
 18 µm/K

**Basic data**

Basic standard

IEC 60947-5-2, IEC 60947-5-7

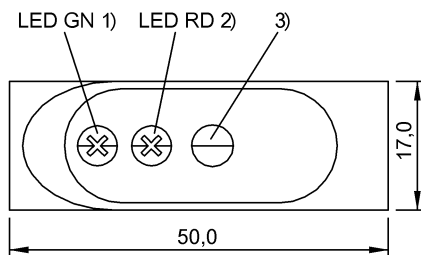
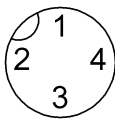
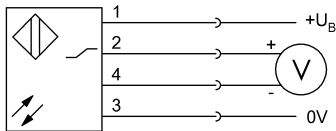
**BOD 26K-LA02-S4-C**  
**Ordering code: BOD0004**

Photoelectric distance sensor  
Series 26K  
Working Range: 45...85 mm

0...10 V  
Laser red light, Laserklasse 2  
DC, direct current

**BALLUFF**  
sensors worldwide

Only for NFPA 79 applications (machines with a supply voltage of maximum 600 volts). Device shall be connected only by using any R/C (CYJV2) cord, having suitable ratings.  
Order accessories separately.



- 1) Operating voltage
- 2) Error